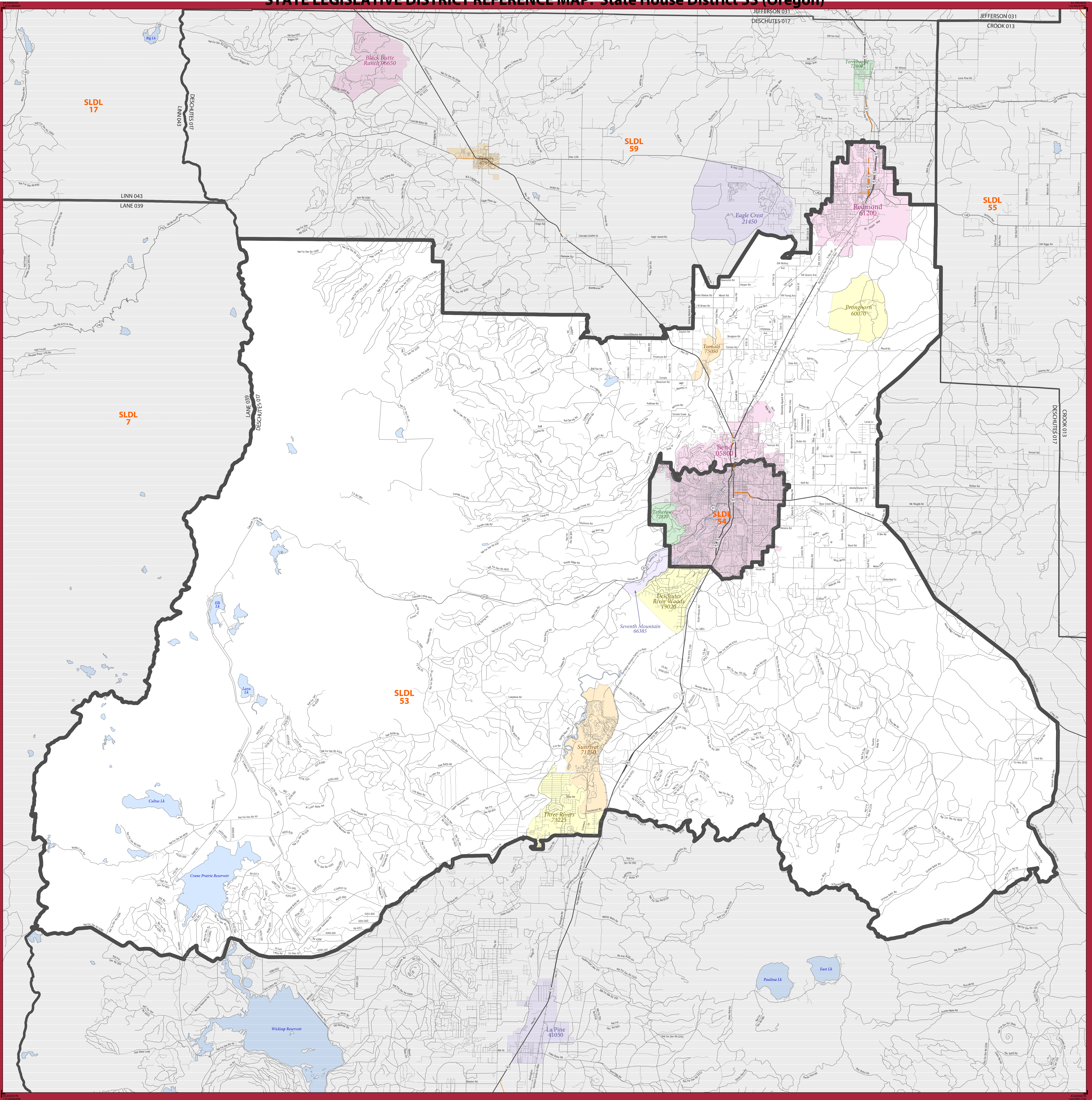


STATE LEGISLATIVE DISTRICT REFERENCE MAP: State House District 53 (Oregon)



| LEGEND | |
|---|----------------------|
| SYMBOL DESCRIPTION | SYMBOL |
| International | ----- |
| Federal American Indian Reservation | |
| Off-Reservation Trust Land | |
| State American Indian Reservation | |
| State Legislative District - Lower (House) | ----- |
| State (or statistically equivalent entity) | ----- |
| County (or statistically equivalent entity) | ----- |
| Minor Civil Division (MCD) | ----- |
| Consolidated City | |
| Incorporated Place ² | |
| Census Designated Place (CDP) ² | |
| DESCRIPTION | SYMBOL |
| Interstate | ----- |
| U.S. Highway | ----- |
| State Highway | ----- |
| Other Road | ----- |
| Railroad | ----- |
| SYMBOL | DESCRIPTION |
| ----- | Water Body |
| ----- | Outside Subject Area |
| ----- | ----- |

Where international, state, county, and/or MCD boundaries coincide, the map shows the boundary symbol for only the highest-ranking of these boundaries.

1 MCD boundaries are shown in the following states in which some or all MCDs function as general-purpose governmental units: Connecticut, Illinois, Indiana, Kansas, Maine, Massachusetts, Michigan, Minnesota, Missouri, Nebraska, New Hampshire, New Jersey, New York, North Dakota, Ohio, Pennsylvania, Rhode Island, South Dakota, Vermont, and Wisconsin. (Note that Illinois and Nebraska have some counties covered by nongovernmental precincts and Missouri has most counties covered by nongovernmental townships.)

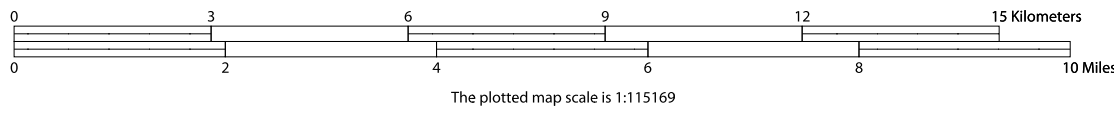
2 Place label color corresponds to the place fill color.
Label colors: Davis Davis Davis Davis Davis

State legislative districts are delineated based on the results from the 2010 Decennial Census; all other legal boundaries and names are as of January 1, 2010. The boundaries shown on this map are for Census Bureau statistical data collection and tabulation purposes only; their depiction and designation for statistical purposes does not constitute a determination of jurisdictional authority or rights of ownership or entitlement.

Geographic Vintage: 2010 Census (reference date: January 1, 2010)
Data Source: U.S. Census Bureau's MAF/TIGER database (BAS13)
Map Created by: Geography Division: May 19, 2013

U.S. DEPARTMENT OF COMMERCE Economics and Statistics Administration U.S. Census Bureau

Projection: Albers Equal Area Conic
Datum: NAD83
Spheroid: GR80
1st Standard Parallel: 42 42 46
2nd Standard Parallel: 45 34 55
Central Meridian: -120 34 56
Latitude of Projection's Origin: 41 59 44
False Easting: 0
False Northing: 0



PARENT SHEET 1
Total Sheets: 1
Index Sheets: 0
Parent Sheets: 1

NAME: State House District 53
ENTITY TYPE: State Legislative District - Lower (House)
ENTITY CODE: 053
ST: Oregon (41)
CO: Deschutes (017)

SLDL REF MAP (PARENT)
250404US0001